

KORG

KORG KONTROL Editor Owner's Manual

Ⓔ Ⓟ

Table of Contents

Introduction	2
What is the KORG KONTROL Editor?	2
Operating requirements	2
Installation	3
Installation for Windows users	3
Installation for Mac OS X users	3
Quick start	4
Starting the KORG KONTROL Editor	4
Editing scene data	4
What are scene data and scene sets?	5
Writing scene data into your Korg MIDI controller	5
KORG KONTROL Editor screens and functions	6
Device select screen	6
Show only connected devices	6
Displaying the screen to obtain the bundled software license	6
Main screen	7
Items on the screen and their function	7
Basic operation	8
Other operations	8
Global data setting screen	9
Items on the screen and their functions	9
Preference settings	10
MIDI ports	10
Other	10
File management	11
Menu	12
File	12
Edit	12
Send	13
Help	13
Troubleshooting	14
Software won't start up	14
Can't transfer data	14
Can't save global data in a file	14
Can't obtain the bundled software license	14

- Mac, Mac logo and Mac OS are trademarks of Apple Inc., registered in the U.S. and other countries.
- Windows 7 and Windows 8 are trademarks of Microsoft Corporation in the US and other countries.
- All product names and company names are the trademarks or registered trademarks of their respective owners.
- Specifications and appearance are subject to change without notice for improvement.

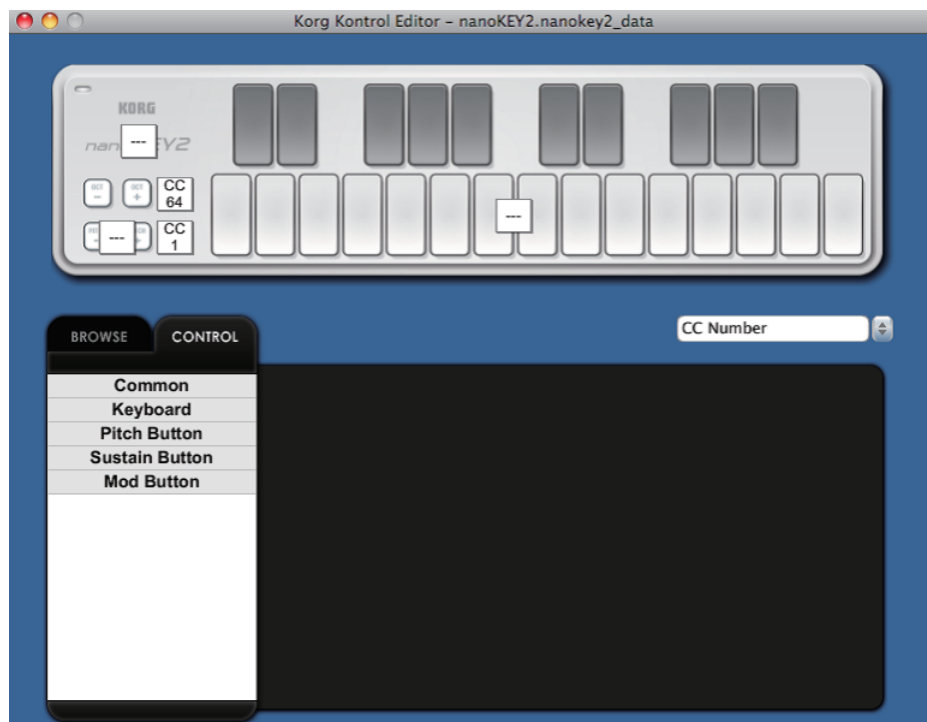
Introduction

Thank you for purchasing a Korg MIDI controller.

To help you get the most out of your new instrument, please read this manual carefully.

What is the KORG KONTROL Editor?

The KORG KONTROL Editor lets you edit the parameters in your Korg MIDI controller, and save the settings on your computer.



Caution

- ⚠ Do not disconnect your Korg MIDI controller while the KORG KONTROL Editor is running.
- ⚠ Do not use your Korg MIDI controller or the KORG KONTROL Editor while any data is being transmitted.

Operating requirements

Windows

- | | |
|-------------------------|---|
| Computer | Computer that has a USB port and satisfies the requirements for running Microsoft Windows 7 or later. |
| Operating system | Microsoft Windows 7 SP1(32bit, 64bit) or later. |

Mac OS X

- | | |
|-------------------------|---|
| Computer | Computer: Apple Macintosh computer with an Intel processor that has a USB port and satisfies the requirements for running Mac OS X. |
| Operating system | Mac OS X 10.6.8 or later. |

- ⚠ An internet connection is required for bundled software validation.
- ⚠ Full functionality is not guaranteed with all computers that satisfy these system requirements.

Installation

Installation for Windows users

Proceed as follows to install the software in Windows.

- 1** Double-click “Setup_E.exe” to start the installation process.
- 2** The KORG KONTROL Editor Installer screen will appear. Follow the on-screen instructions to install the software.

Installation for Mac OS X users

Proceed as follows to install the software in Mac OS X.

- 1** Copy the “KORG KONTROL Editor” folder to the “Applications” folder.

Quick start

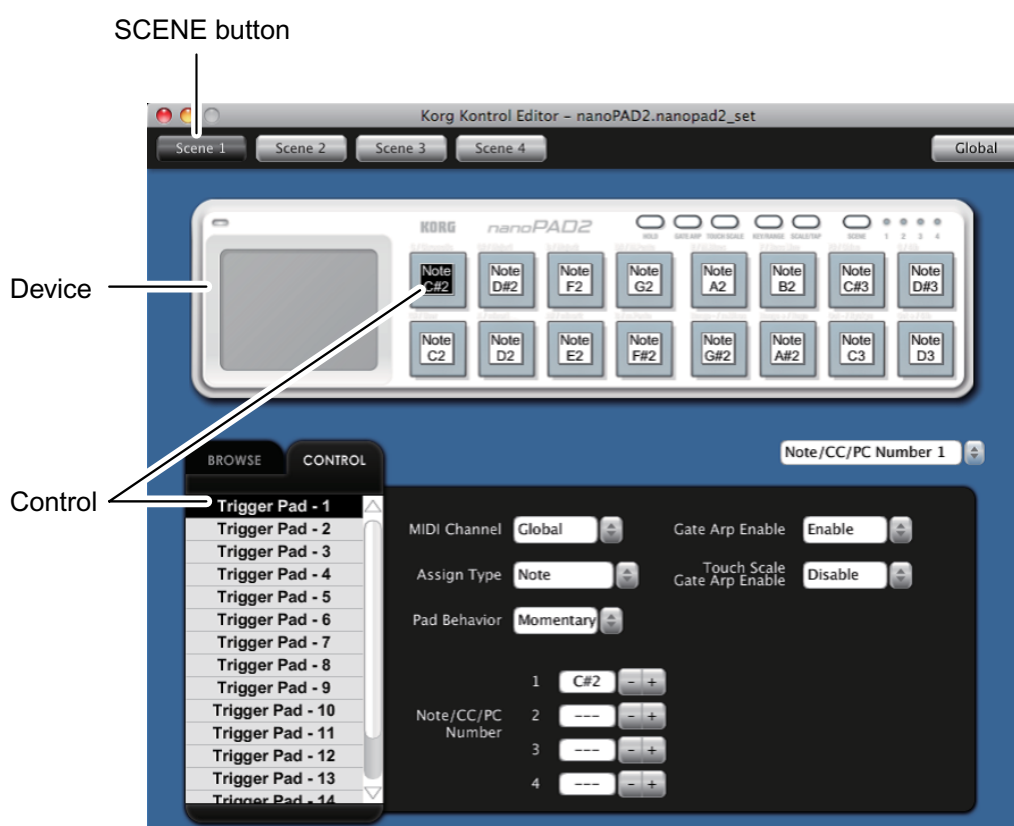
Starting the KORG KONTROL Editor

note In order to use the KORG KONTROL Editor, you must download the Korg USB-MIDI driver from the Korg website and install it as described in the accompanying documentation. (<http://www.korg.com/>)

- 1 Use a USB cable to connect your Korg MIDI controller to your computer.
- 2 In the “KORG KONTROL Editor” folder, select “KORG KONTROL Editor” to begin.
Mac OS X The “KORG KONTROL Editor” folder is located in the “Applications” folder.
Windows7 The “KORG KONTROL Editor” folder is located in the taskbar “Start”-“All Programs”-“KORG.”
Windows8 Select the “KORG KONTROL Editor” displayed on the Windows 8 home screen.
- 3 A list of connected Korg MIDI controllers will be displayed. Please select the controller whose settings you would like to edit for. Scene data will be automatically loaded from the selected device.

Editing scene data

Here’s how to edit scene data in the main screen.



- 1) SCENE buttons will be displayed if the device has more than one scene. Click the scene that you want to edit.
- 2) In the screen, click the control that you want to edit.
- 3) The parameters of the selected control are shown in the parameter edit area in the lower right pane. This is where you can edit the parameters.

What are scene data and scene sets?

Parameters are assigned to the controls (sliders, knobs, X-Y pad, etc.) of a Korg MIDI controller. These parameter assignments are collectively called “scene data.”

Some Korg MIDI controllers have more than one scene; a collection of these scenes is called a “scene set.”

Writing scene data into your Korg MIDI controller

In order for the parameters that you’ve edited in the KORG KONTROL Editor to be reflected in your Korg MIDI controller, you’ll need to write the edited scene data into the Korg MIDI controller. Here’s how: From the “Send” menu, choose “Write Scene Data.” A confirmation dialog box will appear, then click the OK button.



Do not use your Korg MIDI controller or the KORG KONTROL Editor while any data is being transmitted.

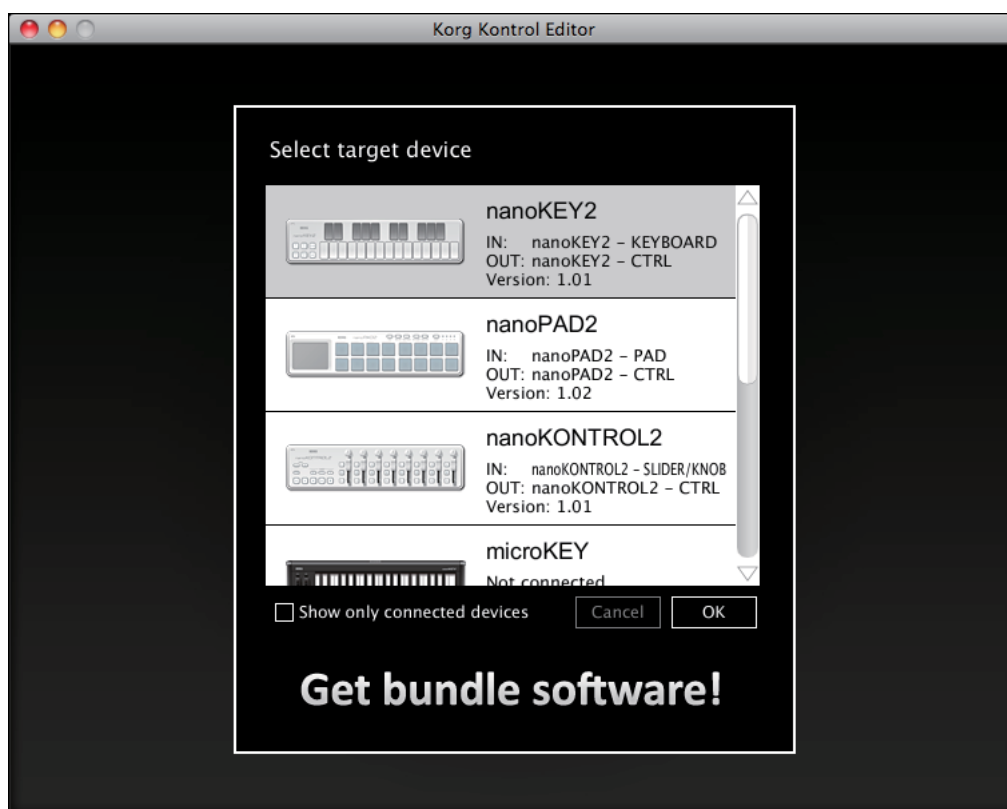
KORG KONTROL Editor screens and functions

This section provides a brief explanation of the KORG KONTROL Editor's screens and their functions.

Device select screen

Here you can select the device (Korg MIDI controller) that you want to edit.

From this screen, you can also display a screen that enables you to obtain the bundled software license.



If this is the device whose parameter settings you want to edit, click the OK button.

Show only connected devices


The KORG KONTROL Editor allows you to edit the parameters of a device that is not connected. To do so, un-check the "Show only connected devices" check box.

Select this check box if you want to only see the devices that are connected.

note If the preference setting "Specify MIDI ports manually" is on, you won't be able to set the "Show only connected devices" option.

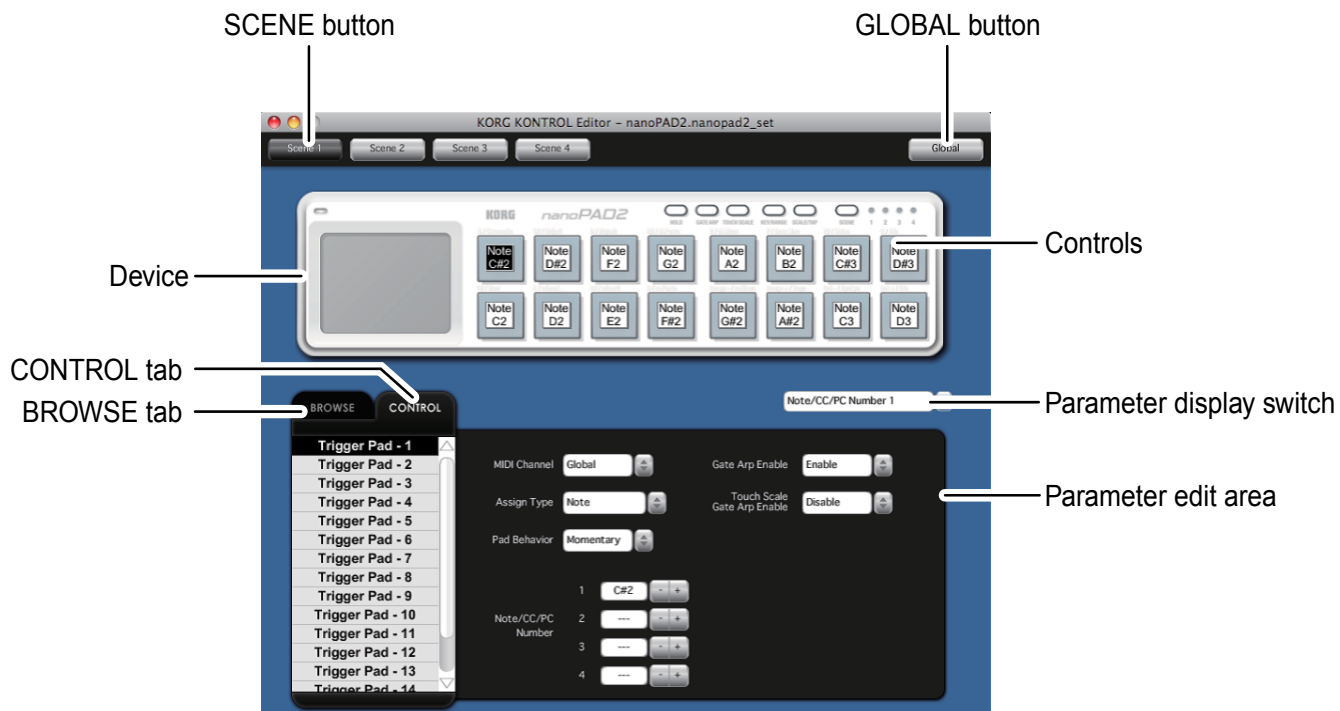
Displaying the screen to obtain the bundled software license

You can display a screen that enables you to obtain a license for software that may be bundled with your Korg MIDI controller. Use this screen if any software is bundled with the Korg MIDI controller.

 Have a Korg Bundled Software PIN ready to obtain the license.

Main screen

The main screen is where you can edit your device's scene data.



Items on the screen and their function

Device

This area shows an image of the device that you selected in the device select screen.

SCENE button

Click the SCENE button of the scene that you want to edit.

⚠ This button may not be displayed, depending on the selected device.

GLOBAL button

Click the GLOBAL button to access the global data edit screen.

On the global data edit screen, you can set, transfer, save or load data.

⚠ This button may not be displayed, depending on the selected device.

Parameter display switch

This lets you switch the parameters that are shown over each control in the device image.

Parameter edit area

This area enables you to view and edit the parameters of the selected control.

Controls

This area shows the parameters that you selected using the parameter display switch.

If you've selected a parameter that the control does not have, this will indicate "--".

When you click this, the parameters of the control will appear in the parameter display area.

Switching the BROWSE / CONTROL tabs

BROWSE tab

This shows the folder hierarchy of your computer's hard disk.

From the folder and file tree, you can select a scene set file and load it.

CONTROL tab

This lists the controls.

When you click in the control list, the parameters of that control will appear in the parameter edit area.

Basic operation

Here's the basic procedure for editing in the main screen.

- 1** If your device has more than one scene, the SCENE buttons are displayed. Select the scene that you want to edit.
- 2** Click a control in the device image or in the control list of the CONTROL tab.
- 3** The parameters of the selected control are shown in the parameter edit area. Edit the parameters here.

note For details on each parameter, refer to the owner's manual of your Korg MIDI controller.

Other operations

Cut, Copy, Paste, Clear

You can edit the settings for the SCENE buttons and the controls in the CONTROL tab, by performing "Cut," "Copy," "Paste," and "Clear" operations from the "Edit" menu.

Drag and drop

You can exchange the setting for the SCENE buttons and the controls in the CONTROL tab by dragging and dropping. To copy the settings, drag and drop while holding down the Ctrl key (Mac: Option key).

Undoing the most recent operation

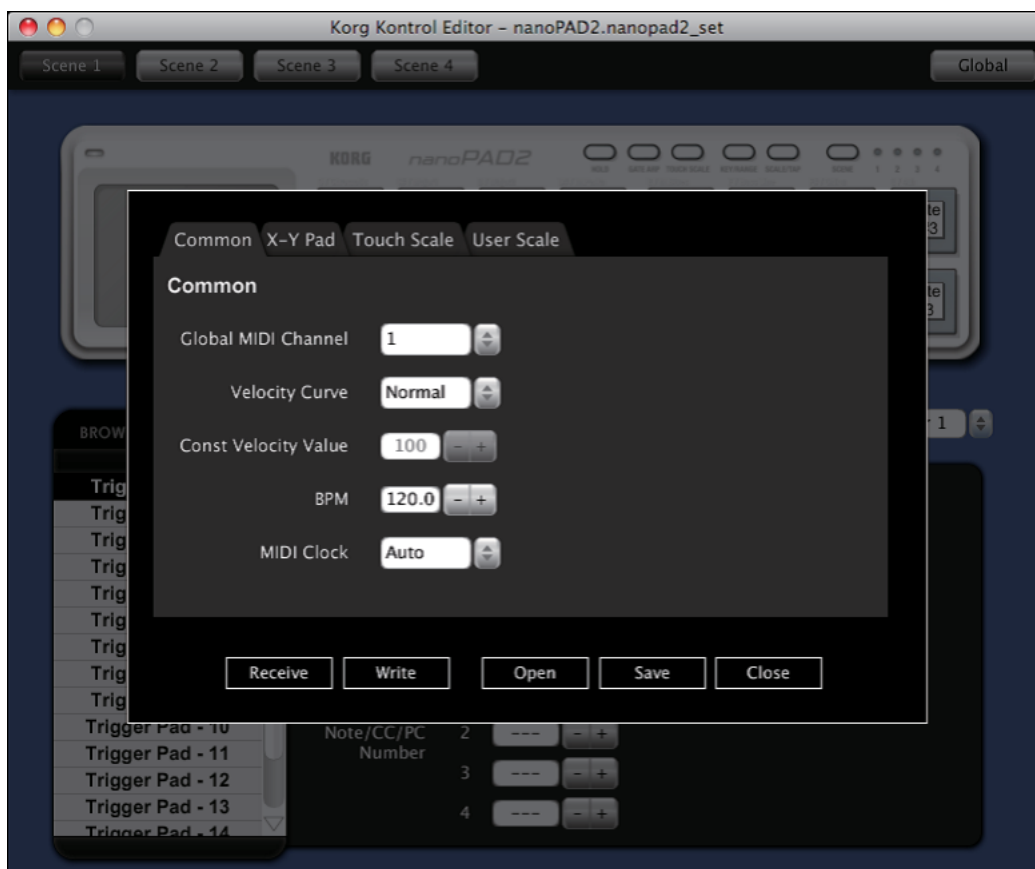
By selecting the "Undo" command from the "Edit" menu you can undo the previous operation.

Redoing an undone operation

By selecting the "Redo" command from the "Edit" menu you can return to the state prior to executing the "Undo" command.

Global data setting screen

Here is where you can edit your device's global data.



Items on the screen and their functions

Parameter setting area

This area enables you to set global parameters.

note For more information on the global parameters, refer to the owner's manual for your Korg MIDI controller.

Receive button

This lets you load global data from the Korg MIDI controller.

Write button

Click this button to write edited global data to the Korg MIDI controller.

Open button

Click this button to load a global data file.

Save button

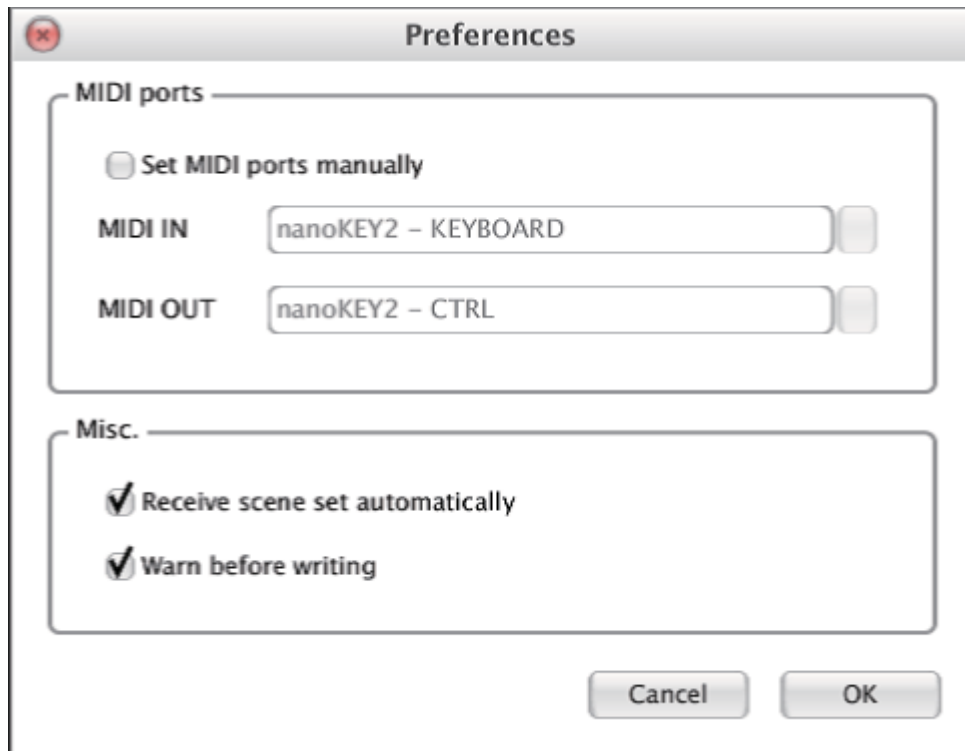
Click this button to save edited global data as a global data file with a new name.

Close button

Click this button to close the global data setting screen and return to the main screen.

Preference settings

Choose “Preferences ...” from the “Edit” menu to access the Preferences dialog box.



MIDI ports

Specify MIDI ports manually

Turn this on if you want to specify the MIDI ports manually instead of using automatic device detection. If this setting is on, use the MIDI IN and MIDI OUT fields to specify the ports where your Korg MIDI controller is connected.

MIDI IN

Specify the MIDI IN port where your Korg MIDI controller is connected.

MIDI OUT

Specify the MIDI OUT port where your Korg MIDI controller is connected.

Other

Load data automatically

If this setting is off, scene data will not be automatically loaded from your Korg MIDI controller when the main screen for the device is shown.

Warn when writing data

If this setting is off, a warning dialog box will not appear when writing data to your Korg MIDI controller.

File management

The following data can be transferred between the KORG KONTROL Editor and your Korg MIDI controller.

Device	Type	Content	Extension
nanoKEY	Scene data	All parameters that can be set on the nanoKEY, such as the velocity curve and MIDI channel.	nanokey_data
nanoPAD	Scene data	All parameters in one nanoPAD scene, such as trigger pads and X-Y pad.	nanopad_data
	Scene set	Parameters for four scenes. (not including global parameters)	nanopad_set
	Global data	The nanoPAD's global parameters, such as the global MIDI channel and velocity curve.	nanopad_glob
nanoKONTROL	Scene data	All parameters in one nanoKONTROL scene, such as the sliders and buttons.	nktrl_data
	Scene set	Parameters for four scenes	nktrl_set
microKEY-25	Scene data	All parameters that can be set on the microKEY-25, such as the velocity curve and MIDI channel.	microkey25_data
microKEY-37/61	Scene data	All parameters that can be set on the microKEY, such as the velocity curve and MIDI channel.	microkey_data
nanoKEY2	Scene data	All parameters that can be set on the nanoKEY2, such as the velocity curve and MIDI channel.	nanokey2_data
nanoPAD2	Scene data	All parameters in one scene, such as the trigger pad's MIDI channel and note number.	nanopad2_data
	Scene set	Parameters for four scenes. (not including global parameters)	nanopad2_set
	Global data	The nanoPAD2's global parameters, such as the global MIDI channel and velocity curve.	nanopad2_glob
nanoKONTROL2	Scene data	All parameters that can be set on the nanoKONTROL2, such as sliders and buttons.	nktrl2_data
taktile TRITON taktile	Scene data	All parameters that one scene of taktile holds such as sliders, buttons, trigger pads or touch pads.	taktile_data tr_taktile_data
	Scene set	Parameters for 16 scenes. (not including global parameters)	taktile_set tr_taktile_set
	Global data	The taktile/TRITON taktile global parameters, such as the global MIDI channel and velocity curve.	taktile_glob tr_taktile_glob

Menu

File

Select device

Opens the device select screen.

New

Creates a new scene set for the device that is currently selected.

note For devices that do not feature multiple scenes, use this command to make new scene data.

Open

Loads a scene set file. If you select a file for a device other than the one selected in the main screen, the main screen for the device of the selected file will appear.

note For devices that do not feature multiple scenes, use this command to load scene data.

Save

Saves the edited scene set by overwriting the existing scene set file.

note For devices that do not feature multiple scenes, use this command to save scene data to an existing file.

Save As

Saves the edited scene set as a new file with the name you specify.

note For devices that do not feature multiple scenes, use this command to save scene data as a new file.

Load Scene Data

Loads a scene data file into the edited scene.

note This command is unavailable for devices that do not feature multiple scenes.

Save Scene Data

Saves the edited scene as a scene data file.

note This command is unavailable for devices that do not feature multiple scenes.

End

Close the KORG KONTROL Editor.

Edit

Undo

Returns to the state prior to the previous operation.

Redo

Returns to the state prior to executing the Undo command.

Cut

Cuts the selected scene data or control parameter.

Copy

Copies the selected scene data or control parameter.

Paste

Pastes the cut or copied content to the selected scene data or control parameter.

Clear

Clears the selected scene data or control parameter.

Preferences

Displays the Preferences dialog box.

Send

Load Scene Set

Loads the scene set from your Korg MIDI controller.

Write Scene Set

Writes the edited scene set to your Korg MIDI controller.

Load Scene Data

Loads the scene data of the scene that's currently selected in the KORG KONTROL Editor from your Korg MIDI controller.

Write Scene Data

Writes the scene data of the scene that's currently selected in the KORG KONTROL Editor to your Korg MIDI controller.

Help

About

Displays the software version of the KORG KONTROL Editor.

Troubleshooting

Software won't start up

- Make sure that your computer meets the operating requirements.
- Check whether other applications might be running.
If other applications are running, the KORG KONTROL Editor might be unable to start up, or might be unable to transfer data.
If you're unable to start up, close all other applications and try again.

Can't transfer data

- Make sure that the Korg MIDI controller has been detected by the connected computer.
If you are using Windows, go to the Control Panel, open "Hardware and Sounds" → "Device Manager," and check the "Sound, Video, and Game Controllers" tab.
When using Mac OS X, please check the "MIDI Studio" window. Start "Applications" → "Utilities" → "Audio MIDI Setup" in order. Select "Display MIDI window" from the "Window" menu to open the "MIDI Studio" window.
- Make sure that the latest Korg USB-MIDI driver is installed.
You can download the latest Korg USB-MIDI driver from the Korg website.
<http://www.korg.co.jp/English/Distributors/> or <http://www.korg.com/>
- If you're specifying the MIDI ports manually, make sure that the MIDI port settings are correct.

Can't save global data in a file

- Global data will not be included in a scene set file if you try to save it by selecting "Save" or "Save As..." from the menu. To save the global data, use the SAVE button on the global data setting screen to save it into a global data file.

Can't obtain the bundled software license

- Make sure that your computer is connected to the Internet correctly.
- Make sure that you have entered your Korg Bundled Software PIN correctly.
- If any security software is running on your computer, make sure that the software is not blocking communication to or from the KORG KONTROL Editor.